



CABIN RANGE

*Modern comfort,
surrounded by the
outdoors.*

WWW.ARCOPOD.COM.AU

WHO WE ARE

At Arcopod, we design and build premium modular homes and cabins that combine modern design with practical function. Built in our factory for precision and efficiency, every Arcopod is delivered with the highest quality standards and tailored details to fit your unique vision.

We believe accommodation should do more than provide a place to stay, it should enhance the experience of the land or venue it sits on. Whether it's a single retreat cabin, a collection of pods for guest stays, or a tailored solution for weddings and events, Arcopod creates spaces that bring comfort, style, and purpose together.

HOW WE HELP

Arcopod is the solution for landowners, venue operators, and retreat creators looking to unlock new opportunities:

- **For Landowners:** Transform unused land into income-producing accommodation.
- **For Venues:** Add stylish, flexible on-site stays for weddings, events, or functions.
- **For Retreats:** Create unique guest experiences that balance privacy with connection to nature.
- **For Developers:** Scale easily with modular options that can expand as demand grows.

With designs that range from intimate hideaways to family-friendly cabins, Arcopod helps you shape your vision and maximise the potential of your property.

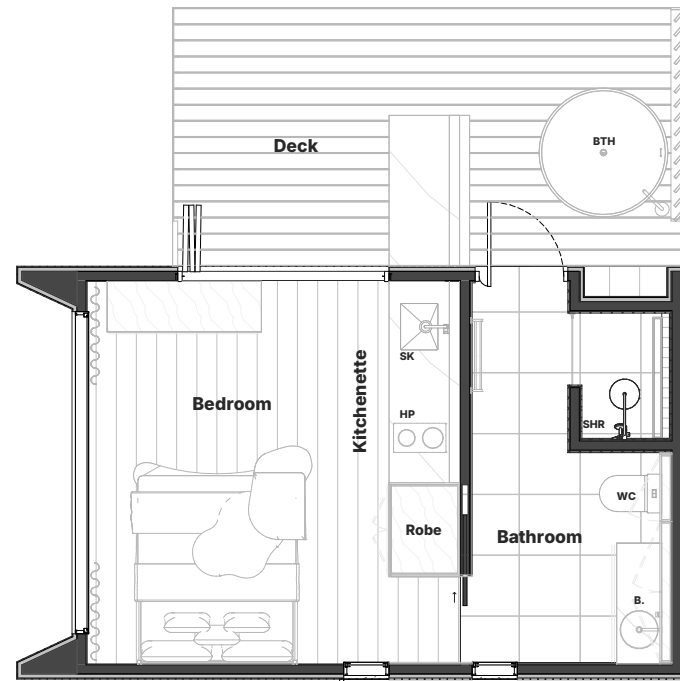


The Cosy is made for sleeping well, refreshing, and getting back outdoors. Perfect for singles, couples, or short-stay getaways.

Length	6650mm
Width	4100mm
Bedrooms	1
Bathroom	1
Modules	1
Internal Area	24m ²
Deck Area	13m ²
Starting from	\$159k

(decking not included in base price)

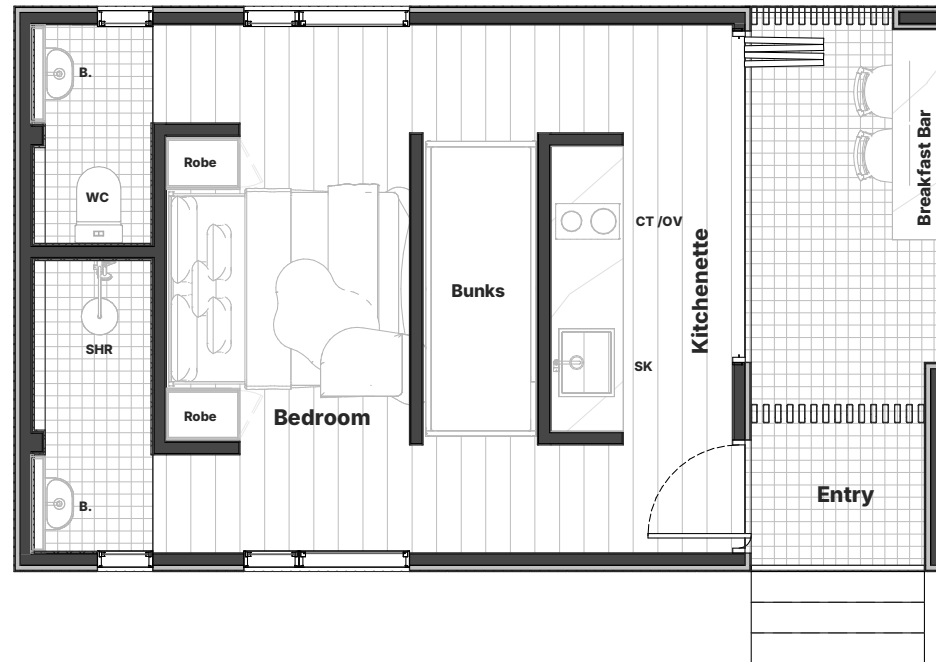
THE COSY



The Rise brings smart design to retreat stays, with central bunks for extra guests, a tucked-away bathroom, and an outdoor breakfast bar made for morning coffee.

Length	7600mm
Width	4500mm
Bedrooms	1
Bathroom	1
Modules	1
Internal Area	27.6m ²
Deck Area	7.3m ²
Starting from	\$179k

THE RISE



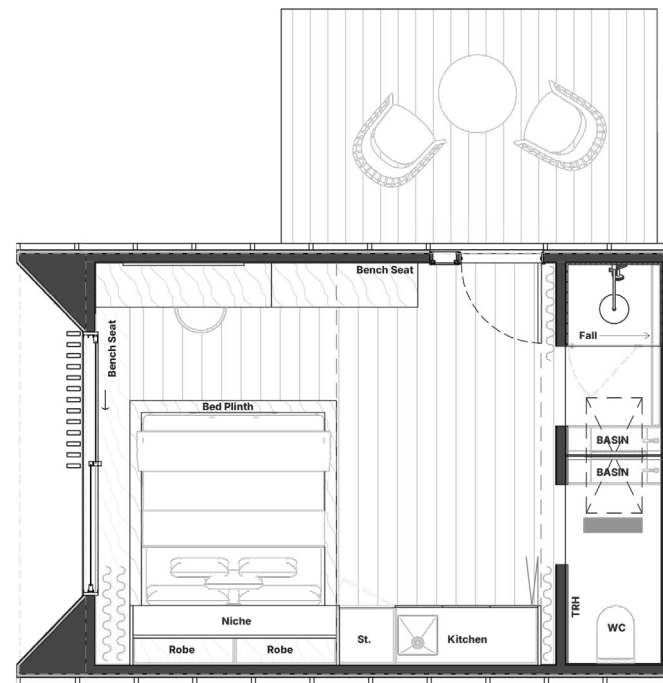
The Willow, a refined modern cabin designed for connection to landscape, light and slower living. An open plan layout with everything you need for a night or two away, without compromising on comfort or detail..

Length	6750mm
Width	4500mm
Bedrooms	1
Bathroom	1
Modules	1
Internal Area	29m ²
Starting from	\$169K

(connecting decking not included in base price)



THE WILLOW



A refined larger cabin for modern living. Accommodates up to 4 people with a queen bedroom, bunk alcove, kitchen, bathroom, and open-plan layout.

THE WACO



Length	10800mm
Width	4500mm
Bedrooms	1.5
Bathroom	1
Modules	1
Internal Area	47m ²
Deck Area	m ²
Starting from	\$279K

(connecting decking not included in base price)



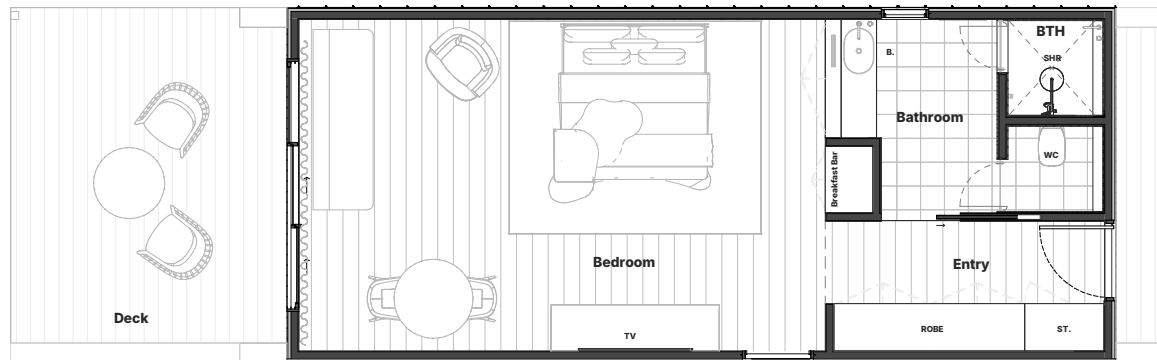
Supports mirrored installation for twin configurations.

A light-filled studio-style cabin designed for solo escapes or couples' stays. Compact in footprint, generous in feel, perfect for hillside getaways or vineyard retreats.

Length	10500mm
Width	4500mm
Bedrooms	1
Bathroom	1
Modules	1
Internal Area	47.25m ²
Deck Area	15.75m ²
Starting from	\$239k

(decking not included in base price)

THE OUTLOOK



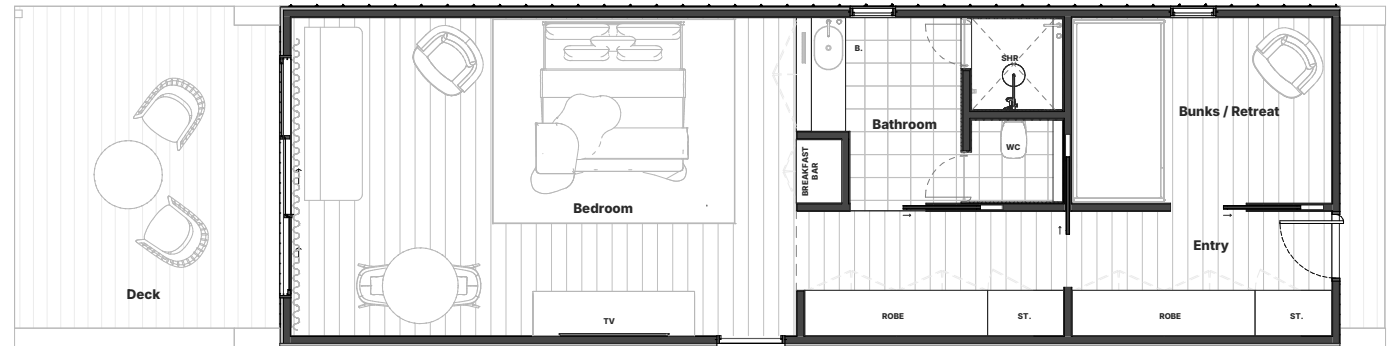
Supports mirrored installation for twin configurations.

A spacious 1-bedroom cabin with added retreat/bunk zone. Ideal for families, small groups or hosts wanting a little more flexibility, comfort meets connection.

Length	14000mm
Width	4500mm
Bedrooms	1.5
Bathroom	1
Modules	1
Internal Area	63m ²
Deck Area	15.75m ²
Starting from	\$249k

(decking not included in base price)

THE GROVE

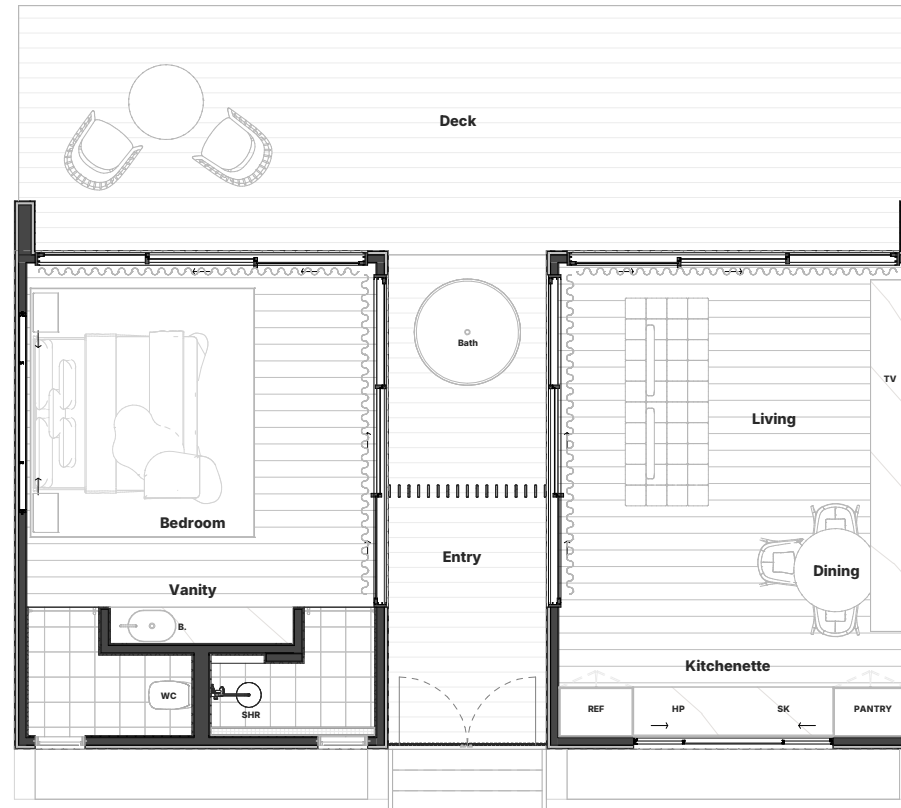


An intimate two-pod layout with a central alfresco and outdoor bath. Designed for quiet luxury, romantic stays or wellness hideaways, your own private retreat in nature.

Length	9550mm
Width	10900mm
Bedrooms	1
Bathroom	1
Modules	2
Internal Area	54m ²
Deck Area	1.4m ²
Starting from	\$259k

(decking not included in base price)

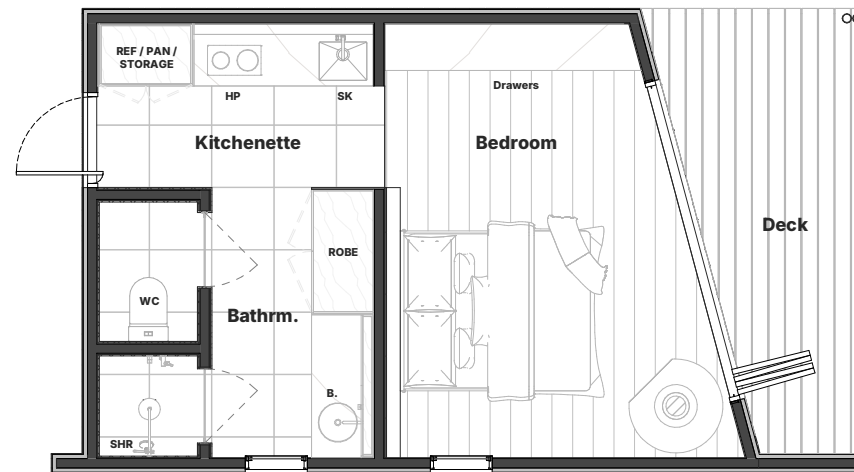
THE HOLLOW



The Revive is a fully self-contained retreat with everything you need in one pod. Complete with a private bathroom, compact kitchenette, and a spacious deck, it's ideal for couples or solo escapes.

Length	7900mm
Width	4500mm
Bedrooms	1
Bathroom	1
Modules	2
Internal Area	27m ²
Deck Area	6.5m ²
Starting from	\$179k

THE REVIVE

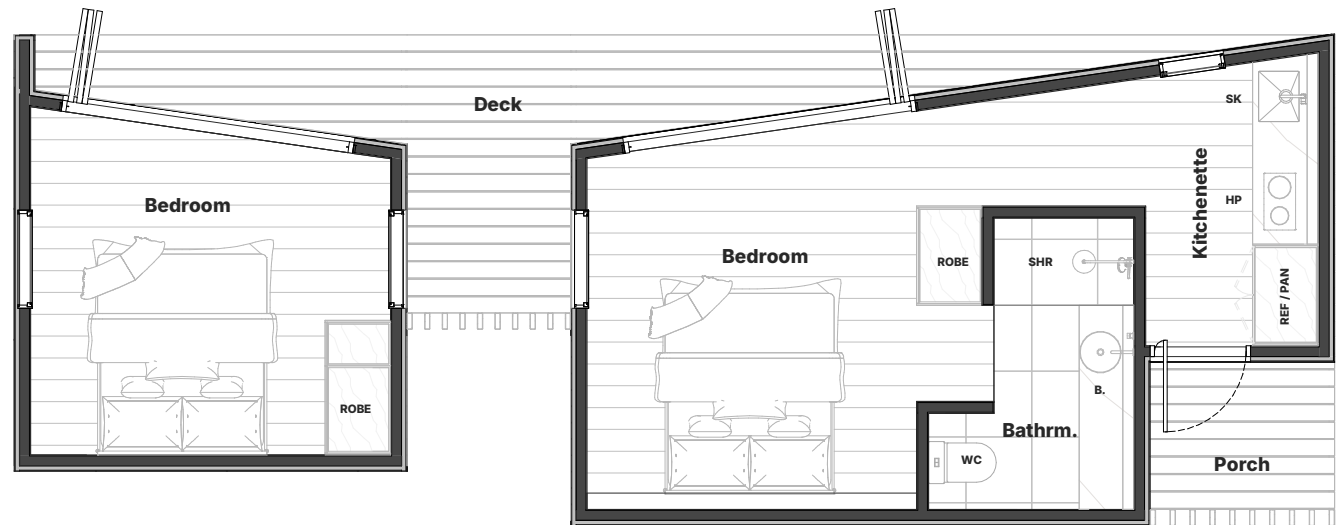


The Aspect features two private bedrooms connected by a central deck breezeway, creating the perfect mix of shared retreat and personal space. With a kitchenette and bathroom tucked to the side, it's designed for families or friends to enjoy the outdoors together while still having their own space.

Length	12100mm
Width	4500mm
Bedrooms	2
Bathroom	1
Modules	2
Internal Area	37m ²
Deck Area	12.5m ²
Starting from	\$259K

(connecting decking not included in base price)

THE ASPECT



STANDARD INCLUSIONS - CABIN RANGE

Exterior

Structure

- 90mm T2 structural pine framing with added bracing, engineered structural pine subfloor and truss roof. All timber is stored neatly inside and never experiences direct weather which may compromise its integrity.
- N3 Wind rating

Cladding & Roof

- Colourbond Trimdeck profile roof sheeting with Colourbond fascia and high front quad gutters
- James Hardie Axon Cladding
- 90mm round Painted PVC downpipes connected to stormwater and legal point of discharge.

Interior

Kitchen

- Stone Ambassador 20mm benchtops, Essentials Range
- Polytec melamine cabinetry with BLUM soft close draw runners and door hinges inclusive of base cupboards, pantry cupboard, pot and cutlery draws with a selection of designer handles to choose from.
- Subway tiled 700mm high splashback above benchtop
- Burazzo undermount 1 ¾ bowl
- Spin gooseneck sink mixer
- Provisional space for your own dishwasher, microwave, and fridge. Including power point as per electrical inclusions.

Appliances

- Westinghouse induction cooktop

Bathroom & Ensuite (layout as per plans)

- Polytec Melamine custom vanity with BLUM soft close draw runners and door hinges, inclusive of 2 draws and cupboard
- Stone Ambassador 20mm benchtops, Essentials Range
- Eden inset basin matt white 355mm x 355mm x 120mm
- Reflekta Pencil edge mirror 1500x1200mm
- Semi frameless shower screens
- Spin basin mixer
- Spin in wall mixer with diverter
- Spin shower arm chrome 450mm,
- Monsoon round shower head 250mm
- Frankie Rimless Wall faced toilet suite
- Spin toilet roll holder
- Spin towel rail 600mm
- Ceramic pressed edge floor tiles, shower wall 2100 high, splashback and 100mm high skirting, 300x600 or 600x600

Tile selection from Beaumont Tiles – Gold Range

Interior finishes

- Harmony Engineered timber flooring
- 42mm x 11mm architraves around all windows and doors
- 42mm x 11mm skirting throughout
- HUME Primecoat internal flush doors
- Ikonik Oslo satin chrome lever sets
- Ardoored white cushion door stops

Insulation

- Bradford Gold Wall Batts R2.0 – installed to all external walls to ceiling height
- Bradford Gold ceiling batts R2.5 installed to internal ceiling area. Terrace excluded.
- R1.3 Anticon blanket to roof

Shelving

- Robes Vinyl sliding doors with single melamine shelf and hanging rail
- Linen – White melamine shelves

Paint works

- Dulux 3-Coat Paint System to all internal walls finished in low sheen.
- Dulux 3-Coat Paint System to ceilings and cornices
- Dulux 2-Coat Paint System to external cladding

Electrical

- LED downlights
- Clipsal Iconic Double GPO
- External weatherproof GPO
- Exhaust fans with light
- TV point
- Clipsal 3 blade ceiling fan
- Havit Up/external light
- External spotlight
- Hardwired smoke detectors with battery backup to meet building regulations.

Heating + cooling

- Electric Hot Water System
- 3.5kW Reverse Cycle Split System Air Conditioner

Disclaimer

All pricing provided in this brochure is indicative only and subject to change without notice. Final pricing may vary depending on site conditions, location, and specific client requirements. Prices shown represent starting costs and do not include transport, installation, site works, service connections, or approvals. Arcopod reserves the right to amend designs, specifications, and inclusions at any time.



CABIN RANGE | [ARCOPOD.COM.AU](https://www.arcopod.com.au)